

Appendix One

Performance Report

for the

Children and Young People's Plan 2009-12

November 2010

SUMMARY OF CONTENTS

Section 1 – CYPP Priority Indicator Report Cards

This section provides the Board with detailed information on the priority indicators, highlighting where significant improvements have been made or performance remains a challenge.

The CYPP Priority indicators are:

- NI 56 Obesity among primary school age children in Year 6
- NI 59 Initial assessments for children’s social care carried out within 7 working days of referral
- NI 65 Children becoming the subject of a Child Protection Plan for a second or subsequent time
- NI 70 Hospital admissions caused by unintentional and deliberate injuries to children and young people
- NI 69 Children who have experienced bullying
- NI 92 Narrowing the gap between the lowest achieving 20% in the Early Years Foundation Stage Profile (EYFSP) and the rest
- NI 75 Achievement of 5 or more A*- C grades at GCSE or equivalent including English and Maths
- NI 079 Achievement of a Level 2 qualification by the age of 19
- NI 102a Achievement gap between pupils eligible for free school meals and their peers achieving the expected level at Key Stage 2
- NI 102b Achievement gap between pupils eligible for free school meals and their peers achieving the expected level at Key Stage 4
- NI 104 The SEN/non-SEN gap -achieving Key Stage 2 English and Maths
- NI 105 The SEN/non-SEN gap -achieving 5 A*-C GCSE inc. English and Maths
- NI 43 Young people within the Youth Justice System receiving a conviction in court who are sentenced to custody
- NI 110 Young people's participation in positive activities
- NI 112 Under 18 conception rate
- NI 148 Care leavers at 19 – in education, employment and training
- NI 115 Substance misuse by young people
- NI 116 Proportion of children in poverty
- NI 117 16 to 18 year olds who are not in education, employment or training (NEET)

Section 2 - CYPP Strategic Improvement Priorities

Provides an executive summary of progress with the CYPP strategic priorities

A note on the “statistical neighbours” used in this report

The statistical neighbour model, produced by the National Foundation for Education Research (nfer), provides a method for benchmarking progress. For each local authority (LA), the model designates a number of other authorities deemed to have similar characteristics. These designated LAs are known as statistical neighbours. Any LA may compare its performance (as measured by various indicators) against its statistical neighbours to provide an initial guide as to whether their performance is above or below the level that might be expected. Brighton and Hove’s statistical neighbours are: Bristol, Bournemouth, Reading, Portsmouth, Sheffield, Southampton, Bath and North East Somerset, Southend-on-Sea, York and Plymouth

Section 1 – CYPP Priority Indicator Report Cards

NI 56 Obesity among primary school age children in Year 6

CYPP Priority	Promote Health and Wellbeing, Inclusion and Achievement		
Result	17.7% (2008) 16.4% (2009) 15.5% (prov) (2010)	Target	17.6% (2010)

The provisional figures for 2010 show a continued fall in obesity levels at age 11. A full analysis will be conducted when the final figures are available in December.

Activities in support of this outcome

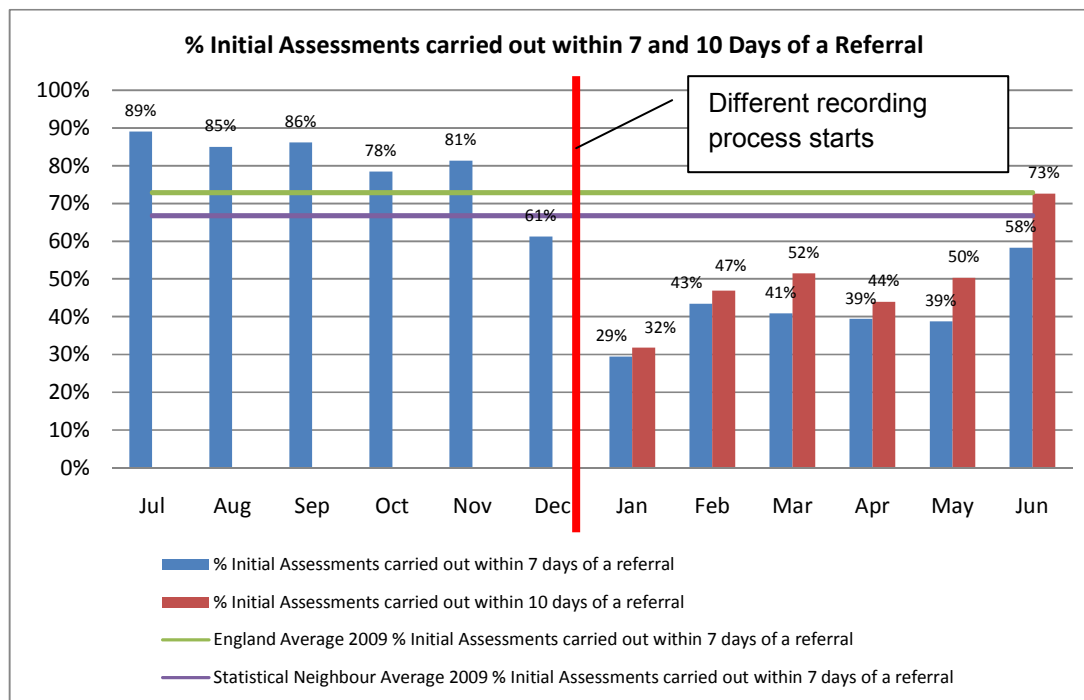
A local strategy 'Promoting the Healthy Weight and Healthy Lives of children in Brighton and Hove' is delivering:

- Access to health promotion and prevention activities e.g. food growing, dietary advice, cookery training, play and physical activity opportunities to all children aged
- Healthy Choice Award: developing standards and activities to encourage and engage businesses and all youth settings, parks, sports and leisure facilities to offer healthy food choices.
- Development of a single point of access for lifestyle and weight management: "One Stop Shop" weight management referral. The referrals are for both adults and children. The scheme has increased awareness of the range of community nutrition services available among GPs and other health professionals. The scheme was launched in January 2009. GPs and practice nurses account for a large proportion of referrers.
- Workforce development training: weight management training for health visitors and school nurses.
- Local implementation of the National Child Measurement Programme including analysis of local data from the NCMP for children in Reception Year and Year 6 and routine feedback of results to parents.

NI 59 Initial assessments for children's social care carried out within 7 working days of referral

CYPP Priority	Strengthen safeguarding and child protection, early intervention and prevention		
Result (Year to date)	58% (June 2010)	Target	78% (2010/11)

Chart showing performance month by month

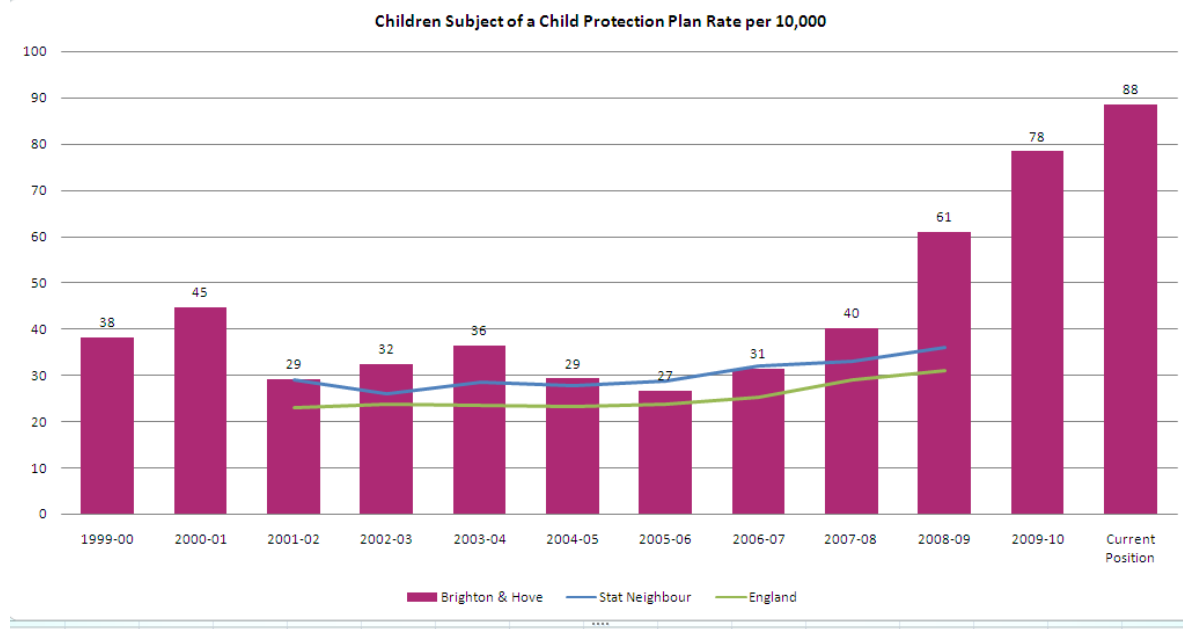


Source: Carefirst social care system

As highlighted in the baseline performance report presented to the Board in March this year, work to review the recording and reporting of this key child protection process was undertaken in December 2009. Necessary adjustments to our systems and practices resulted in a predicted drop in performance. Since January, performance has improved to 58% completion in 7 days and 73% within 10 days.

The target time will change to 10 working days from April 2011 and the first comparative data on the new timescale will be available in October 2011. We anticipate the announcement of further significant changes to central government performance requirements following the publication of the Munro Review of Child Protection which reports in April next year.

The completion time for social care initial assessments reflects activity levels. The chart below shows the demand on social care services from a rising child protection caseload over recent years to a current (July) high of 88 cases per 10,000 population.



Source: Carefirst social care system

Looked after children numbers have also increased from 372 in Sept 2008, to 460 in Sept 2009 and 478 in August 2010.

Activities in support of this process

The Board has received a separate report on the Unannounced Inspection by Ofsted of contact, referral and assessment arrangements within local authority children's services in Brighton and Hove City Council which was conducted on 7 and 8 July 2010. The inspection report found strengths in professional support, workforce management and strategic planning. Unlike many other authorities no areas for priority action were identified.

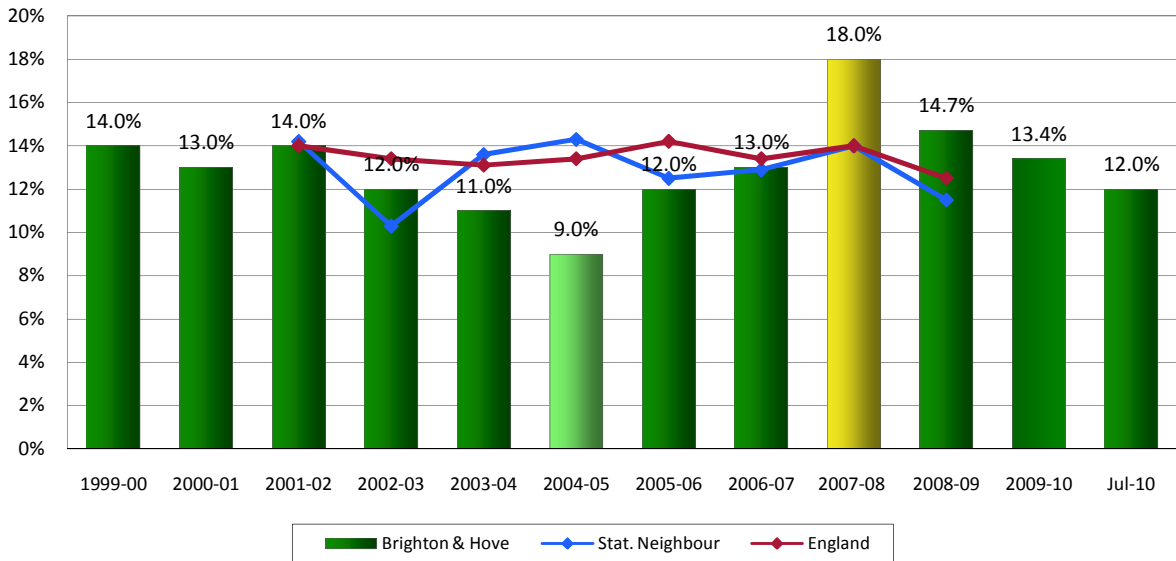
A post-inspection action plan is in place to address issues raised by inspectors.

NI 65 Percentage of children becoming the subject of Child Protection Plan for a second or subsequent time

CYPP Priority Strengthen safeguarding and child protection, early intervention and prevention

Result	14.7% (2008/9) 13.4% (2009/10) 12% (current position)	Target	12% (2009/10)
--------	---	--------	---------------

NI 65 % of children becoming subject of a Child Protection Plan for a 2nd/subsequent time



Source: Carefirst social care system

Some re-registrations are essential in responding to adverse changes in circumstance. Performance between 10 and 15% is considered to be good.

Activities in support of this outcome

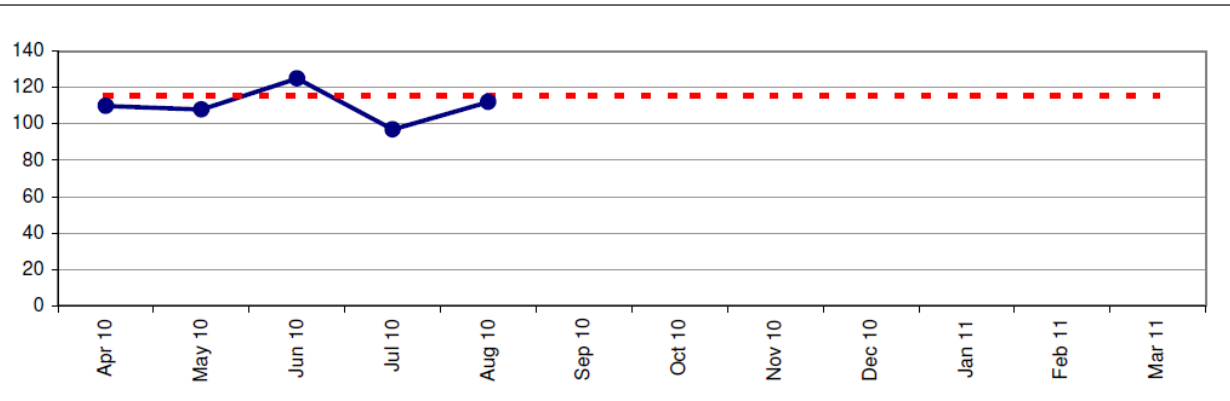
It is encouraging to note that Brighton and Hove's performance around this indicator has been consistently good over a number of years, with 2007/8 being an exception. This performance indicates that child protection plans are effective and are ended in a safe and supportive way and that plans achieved the aim of reducing risk. For those children who remain at risk despite the efforts of a child protection plan, alternative plans and interventions are made to safeguard their future.

NI 70 Hospital admissions caused by unintentional and deliberate injuries to children and young people (per 100,000)

CYPP Priority Strengthen safeguarding and child protection, early intervention and prevention

Result	1468 (2008/9) 1015 (2009/10)	Target	1322 (2009/10)
--------	---------------------------------	--------	----------------

Monthly performance to date in 2010/11 (numbers of admissions per 100,000)



Source: Primary Care Trust

Admissions of children to hospital as a result of injuries are similar to elsewhere having reduced in 2009/10 following a steady increase in previous years. Performance remains below the monthly target level this year. 'Unintended injuries' includes accidents and complications from medical care/surgery. 'Deliberate injuries' includes self-harm and assault.

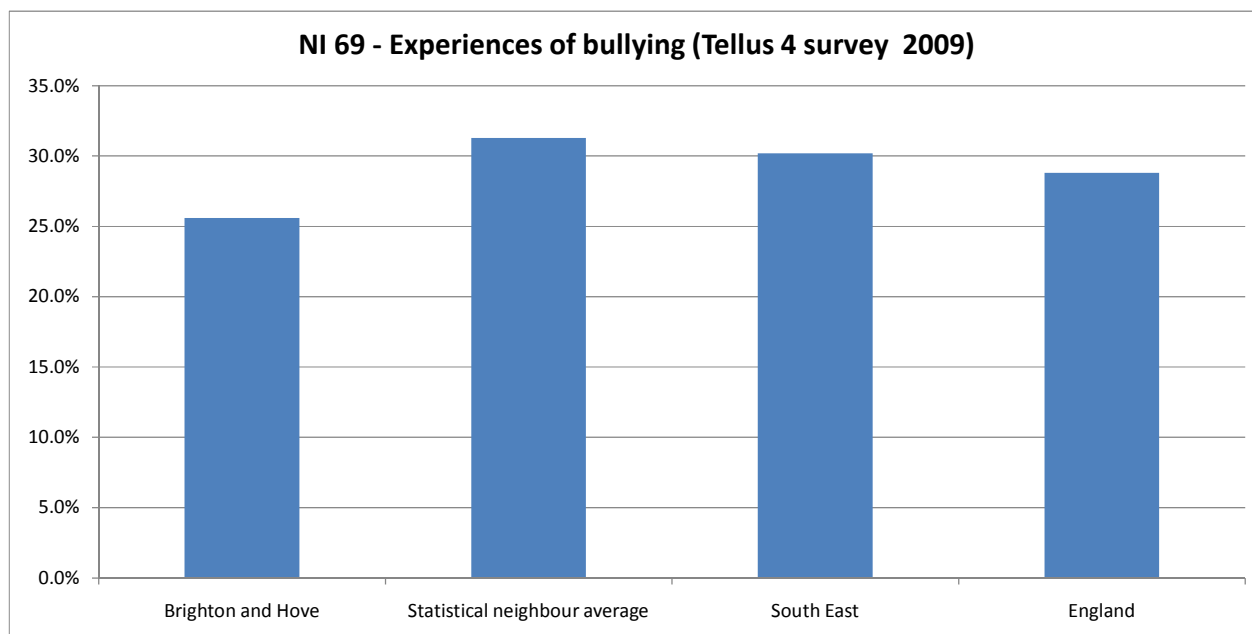
Activities relating to this issue

- Publicity is sent out across the city helping families understand the risks and preventative measures to take relating to sudden infant death
- Brighton and Sussex University Hospitals Accident & Emergency have a system to refer cases to health visitors and the home safety scheme run by public health funded 'Safety Net'.
- Families are provided with home safety checks, safety training, and safety equipment
- For all deliberate injuries, the hospital will refer to social services and appropriate steps are taken to protect the child from further harm

NI 69 Children who have experienced bullying

CYPP Priority	Strengthen safeguarding and child protection, early intervention and prevention		
---------------	---	--	--

Result	25.6%	Target	N/A
--------	-------	--------	-----



Source: NFER/Dept of Education

Brighton and Hove compares well to other authorities as shown in the graph above, which uses data from the nationally administered Tellus survey. This survey was recently de-commissioned and is not taking place this year.

We also conduct a well regarded local survey, the Safe and Well At School Survey. In 2009, this survey identified a significant reduction in levels of bullying reported by children and young people. The survey found that 23% of primary school children reported they had been bullied at school that term, compared to 33% in 2005 and 15% of secondary school children, compared to 26% in 2005. The survey results for 2010 will be available in February 2011.

Activities in support of this outcome

The Healthy Schools Team will actively promote Anti-Bullying Week 2010 (15-19th November). The team provides support for Personal Social Health & Economic education (PSHE) co-ordinators through the Primary Healthy Schools Network and the Secondary PSHE Consortium. Secondary school senior managers are provided with input related to bullying through the Behaviour and Attendance Network.

The local focus for anti-bullying week for secondary schools will be on responding to and challenging racist and religiously motivated incidents through the use of the locally developed DVD *See it!, Say it!, Stop it!* in assemblies, tutor time and PSHE and citizenship.

Materials to support schools to address a range of issues including cyberbullying are available on Pier2Peer, Brighton and Hove's online Learning Platform for schools.

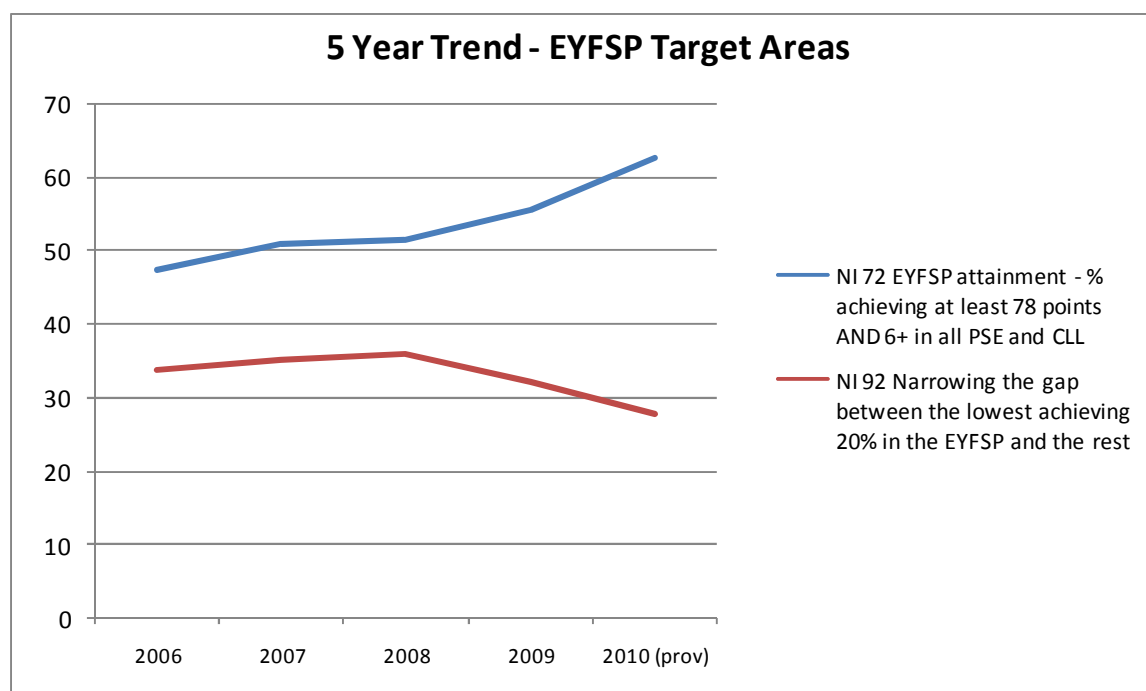
NI 92 Narrowing the gap between the lowest achieving 20% in the Early Years Foundation Stage Profile (EYFSP) and the rest

CYPP Priority	Promote Health and Wellbeing, Inclusion and Achievement		
Result	27.7% (2010)	Target	27.9% (2010)

The Early Years Foundation Stage (EYFSP) is a statutory framework for children's learning and development and welfare from birth to the end of the academic year in which they turn 5. It covers six areas of learning:

- Personal, Social and Emotional Development (PSE)
- Communication, Language and Literacy (CLL)
- Problem-solving, reasoning and numeracy
- Knowledge and understanding of the world
- Physical Development
- Creative Development

Brighton and Hove children do well in their early years and provisional data for NI 92 shows that the gap between those who do least well and their peers has significantly narrowed in the last two years. Results for NI 72 (overall attainment) are also shown below for reference.



Indicator	2006	2007	2008	2009	2010 (prov)
NI 72 EYFSP attainment - % achieving at least 78 points AND 6+ in all PSE and CLL	47.3	50.8	51.4	55.5	62.6
NI 92 Narrowing the gap between the lowest achieving 20% in the EYFSP and the rest	33.7	35	35.9	32.2	27.7

Those who perform least well tend to have the following characteristics: living in deprivation, summer born and youngest in the group, boys, children with English as an additional language and children with special educational needs.

It is therefore significant that improvements to scores have been made by pupils living in even the most deprived parts of the city.

Most Deprived Areas (IDACI)**	Achieving a good score*					
	%			No of Pupils		
	2008	2009	2010	2008	2009	2010
5%	25.24	34.18	41.95	52	67	86
10%	27.11	35.80	41.54	93	126	140
15%	30.85	38.72	43.4	141	175	187
20%	32.87	41.68	45.9	191	248	262
All pupils	51.5	55.5	62.5			

*A good score is defined as 'Achievement of at least 78 points across the Early Years Foundation Stage with at least 6 in each of the scales in Personal Social and Emotional Development and Communication, Language and Literacy'

** IDACI is an index of areas of deprivation affecting children, created by the Office of National Statistics, based around the proportion of children under the age of 16 that live in low income households

Activities in support of this outcome

We are successfully implementing a two part strategy for improving outcomes for children at the foundation stage:

Universal work:

- Children Centres and the Surestart programme across the city
- Quality Improvement programme with all registered settings
- Comprehensive training programme for practitioners to raise the quality of provision
- Specialist services for children with special needs and English as an additional language

Targeted work:

- Additional support for settings and schools who are at risk of underachieving with a tight focus on tracking children's progress.
- 'Communication, Language and Literacy' and 'Every Child a Talker' programmes
- Additional targeted projects for vulnerable groups of children.

NI 75 Achievement of 5 or more A* - C grades at GCSE or equivalent including English and Maths

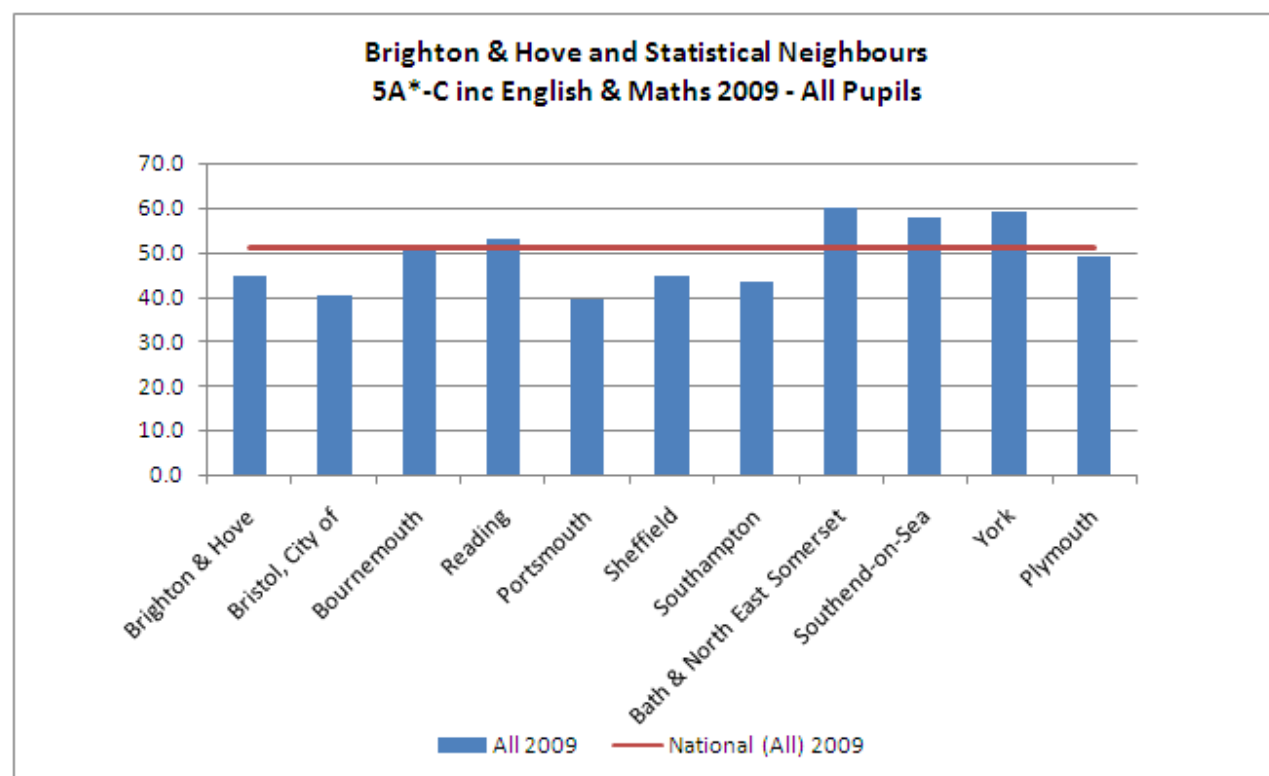
CYPP Priority Promote Health and Wellbeing, Inclusion and Achievement

Result	44.5% (2009) 49.1% (2010 prov)	Target	48% (2009) 51% (2010)
--------	-----------------------------------	--------	--------------------------

Whilst not hitting the challenging target in 2010, the provisional results this year are the best ever, representing a significant improvement on last year. The following table shows the percentage of GCSE students in Brighton & Hove who have achieved five or more A*-C grades including English and Maths. The figures for 2010 are provisional, while the 2009 figures are final

School	2010	2009
Blatchington Mill	66	63
Cardinal Newman	59	56
Dorothy Stringer	63	66
Falmer High	22	25
Hove Park	40	27
Longhill	43	41
Patcham High	37	36
Portslade Community College	35	25
Varndean	58	47
TOTAL	49.1	44.5

The chart below shows the 2009 results against statistical neighbours and the national result for 2009 (red line). Full analysis on the final data will be presented to the Board in the Education Standards report in January 2011



This graph shows Brighton & Hove was 8th place in relation to statistical neighbours in 2009. This outcome in 2009 was unexpected and we failed to meet our target for the year by 2%.

Activities in support of this outcome

The CYPT Board and CYPOSC were provided with reports showing that performance in GCSE examinations was not satisfactory overall in 2009 although it was variable across schools.

In August 2010 the Children and Young People's Overview and Scrutiny Committee reviewed arrangements to support secondary schools and approved the actions taken by the advisory service.

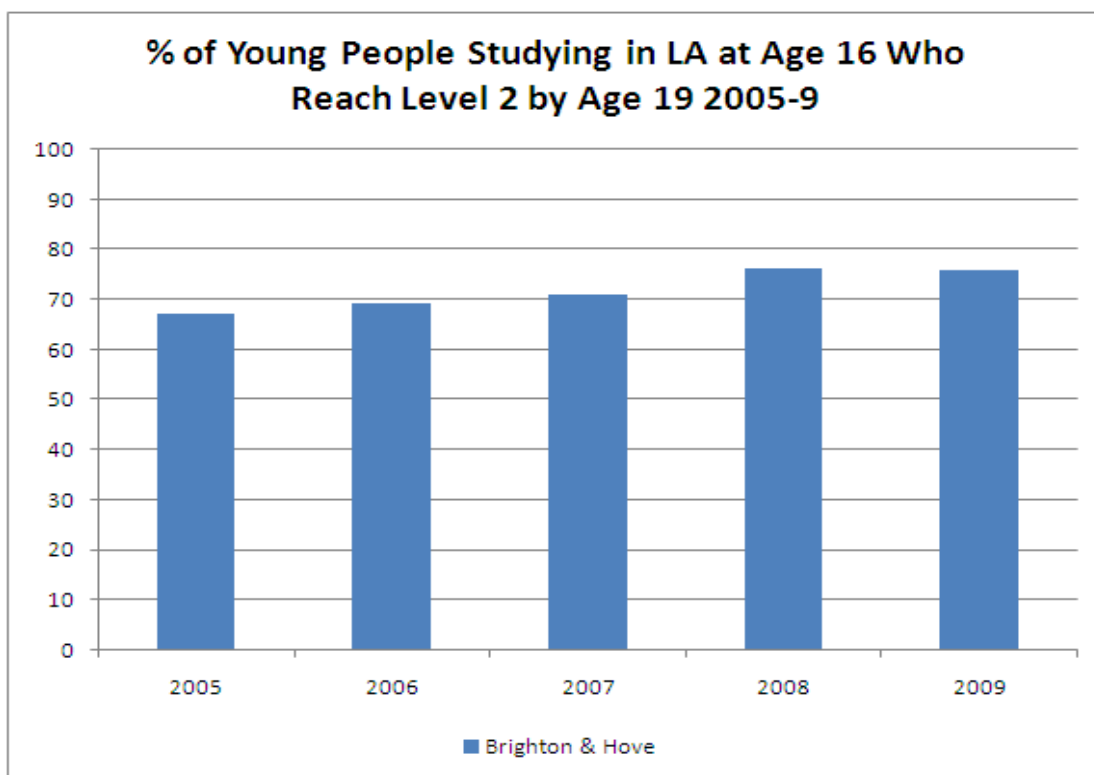
In addition the CYPT Performance Board conducted a detailed review of GCSE performance and developed a number of actions including:

- A presentation of the data at the May Headteachers' Conference and also Governors' training.
- Secondary headteachers consulted about citywide actions for raising standards which included a focus on improving the quality of teaching and improvements in the accuracy and use of assessment.
- Officers exploring best practice in other authorities,
- Increased efforts to improve mathematics teaching, as analysis shows this as a weaker subject
- Analysis of the performance of those pupils who enter late into secondary schools.

Underachieving schools receive additional support and are challenged each half term to show improvement against their raising attainment plans. Much work has focussed on improving the quality of teaching and accuracy of assessment and monitoring for intervention with individual pupils. Monitoring shows that significant progress is being made.

NI 79 Achievement of a Level 2 qualification by the age of 19

CYPP Priority	Promote Health and Wellbeing, Inclusion and Achievement		
Result	67.1% (2005) 76.3% (2008) 76% (2009)	Target	78% (2009)



Data source: DfE SFR06/2010

Examples of the level of qualification required here are: Advanced GNVQ, Apprenticeship, NVQ Level 2, 1 A Level grade A-E, 2 AS Levels grade A-E.

Although there has been solid improvement against this target in Brighton & Hove since 2005 (when the figure was 67.1%), progress stalled in 2009 with a result of 76% against the previous year's result of 76.3%. Brighton & Hove remains below the regional average of 78%.

Activities to support this outcome

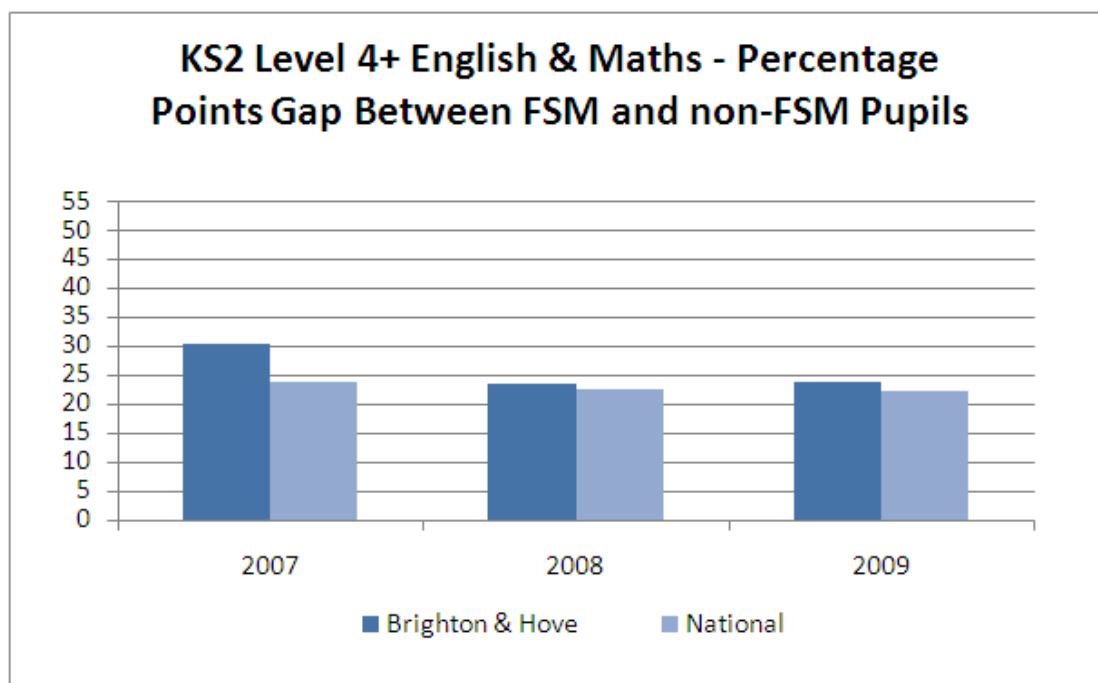
The 14-19 Partnership Board includes senior management representation from all nine secondary schools, the six special schools, and local colleges and training providers. It leads on the formation and implementation of the 14-19 Partnership Strategy.

- Curriculum developments are being implemented through the 14 – 19 Partnership Board such as City Curriculum 15, and the focus on Foundation Learning provision at 16 – 19. These are intended to ensure that the city wide curriculum offer is relevant to the needs of all learners and they have a better chance of success
- Specific instances of poor performance in the 16 – 19 sector are being identified, and providers are being supported in working together to improve standards of attainment
- In particular, schools with sixth forms are being supported in improving their students' attainment, and in considering how they may achieve better outcomes by closer collaboration
- Providers are supported and challenged to use rigorous performance and data monitoring, and share good practice in this.

NI 102a Achievement gap between pupils eligible for free school meals (FSM) and their peers achieving the expected level at Key Stage 2

CYPP Priority	Promote Health and Wellbeing, Inclusion and Achievement		
---------------	---	--	--

Result	23.6% (2008) 23.7% (2009)	Target	N/A
--------	------------------------------	--------	-----



Source: CYPT Performance Team

In 2007 the gap between Free School Meals (FSM) learners gaining Level 4 in English and Maths and non-FSM in Brighton & Hove was 30.4%, 7.5% wider than the national figure of 23%. The gap narrowed in 2008, but in 2009 the gap stood at 1.4% above the national figure.

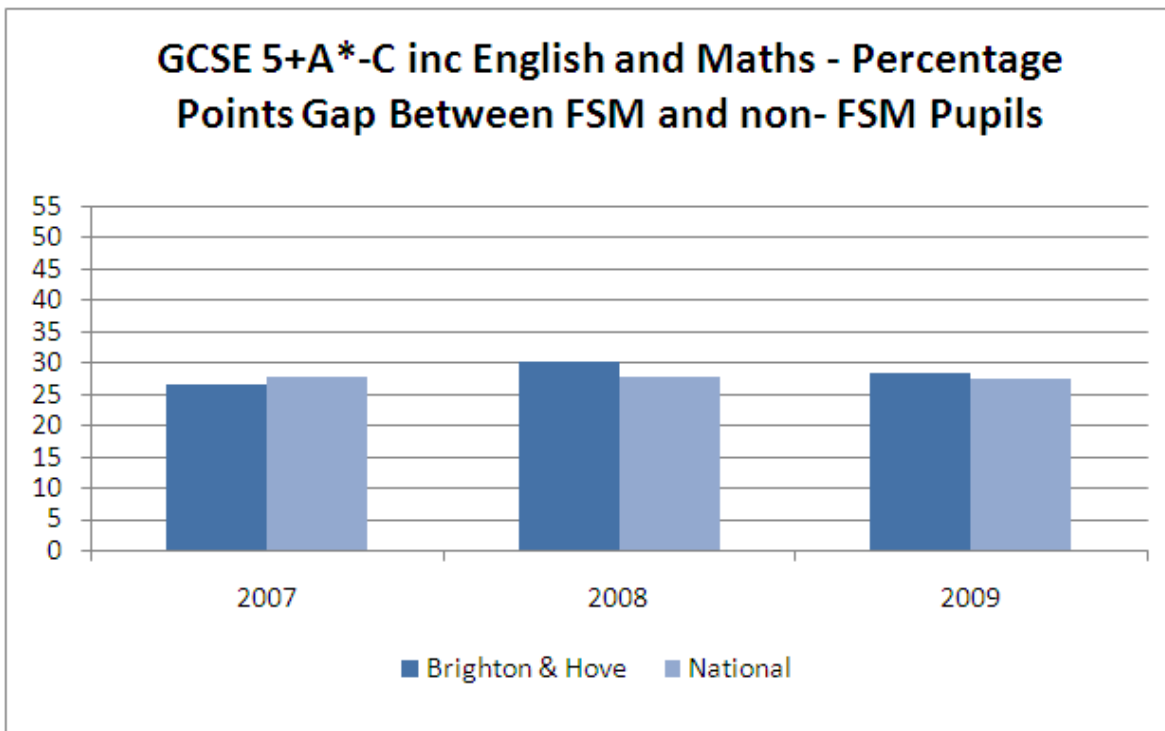
Activities in support of this outcome

A number of activities are designed to drive improvement:

- The development and dissemination of more detailed data gap analysis, which includes FSM pupils
- Sharing the data analysis with groups of headteachers and school staff and using a headteacher conference and workshop to make schools more aware.
- Setting of targets for FSM learners as a part of the target setting process
- A focus each term for the School Improvement Partner (SIP)
- Training sessions for schools and LA staff led by a regional National Strategies adviser
- The formation of a cross-phase working group to explore strategies for narrowing gaps and pilot materials.

NI 102b Achievement gap between pupils eligible for free school meals (FSM) and their peers achieving the expected level at Key Stage 4 (GCSE)

CYPP Priority	Promote Health and Wellbeing, Inclusion and Achievement		
Result	30.1% (2008) 28.5% (2009)	Target	N/A



Source: CYPT Performance Team

In 2007 the gap between FSM learners gaining 5+A*-C grades including English and Maths at GCSE and non-FSM in Brighton & Hove was 26.7%, 1.2% narrower than the national figure. In 2008, there was a change in this position, the gap in Brighton & Hove becoming 2.3% wider than the national figure. In 2009 the gap narrowed again in Brighton & Hove and was close to the national figure.

Activities in support of this outcome

Though the FSM v non-FSM gap is close to the national figure, it remains the case that FSM learners at KS4 attain at a much lower level than their peers in Brighton & Hove (boys eligible for FSM especially) and a priority has been to narrow this gap further. A number of activities have been carried out to address this including:

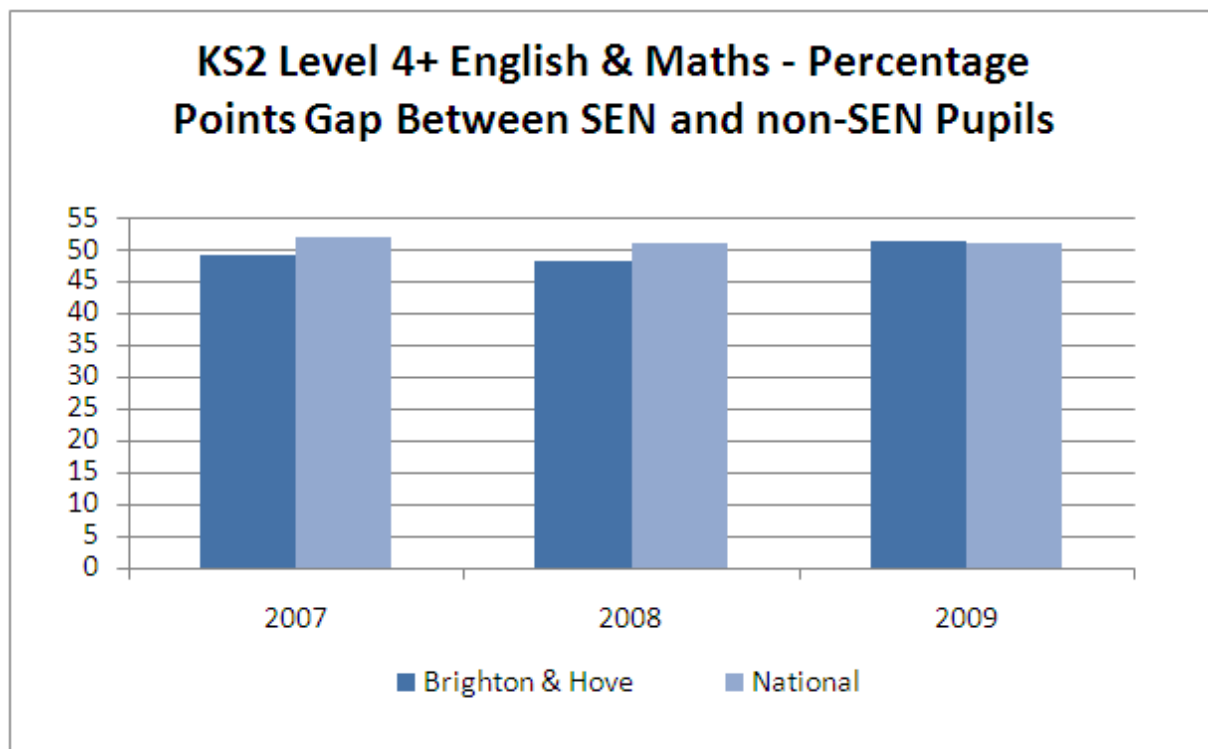
- The development and dissemination of more detailed data gap analysis for FSM students and other learner groups such as SEN, looked after children, learners from different ethnic backgrounds. With regard to FSM, this has been analysed at Local Authority and school level, also by gender and super-output area
- A sharp focus within agendas for School Improvement Partner (SIP) meetings with secondary headteachers on the narrowing of gaps, supported by guidance for SIPs

- A workshop for headteachers on gaps data related to Brighton & Hove
- The setting of targets for FSM learners as a part of the target setting process
- Training sessions on gaps data and research findings into strategies for narrowing gaps for schools' lead staff, led by a regional National Strategies adviser
- The formation of a cross-phase working group to explore strategies for narrowing gaps

Current work is focused on dissemination and use of a pedagogical "toolkit" (developed in Kensington and Chelsea) for trialling with targeted learner groups. This is rooted in the belief that active learning, pace and accountability and use of learning technologies contribute significantly to the narrowing of gaps.

NI 104 The SEN/non-SEN gap -achieving Key Stage 2 English and Maths

CYPP Priority	Promote Health and Wellbeing, Inclusion and Achievement		
Result	48.3% (2008) 51.2% (2009)	Target	N/A



Source: CYPT Performance Team

In 2007, the gap between the attainment of SEN and non-SEN learners in Brighton & Hove was narrower than the national gap by 2%. However, in 2009, this gap is in line with the national figure.

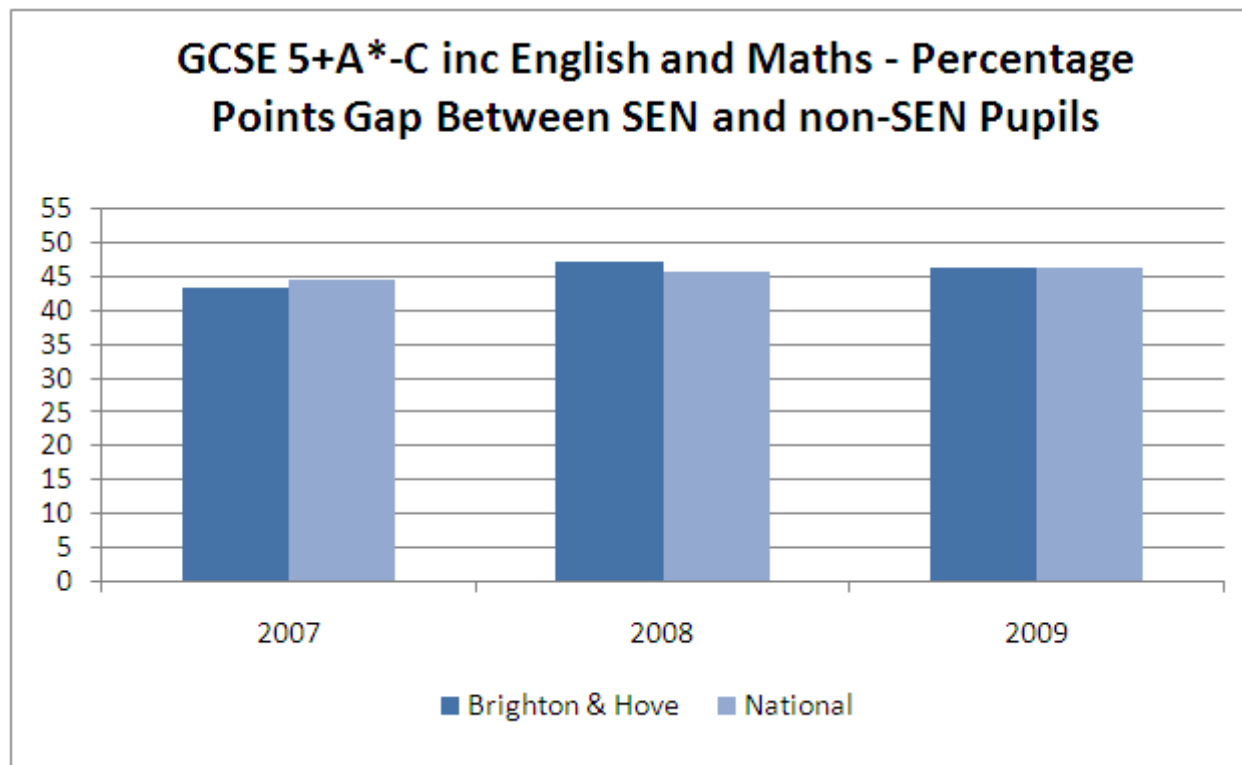
Activities in support of this outcome

The gap in attainment between SEN and non-SEN learners is substantial and a key priority is to narrow this. A number of actions have been taken including:

- The development and dissemination of more detailed data gap analysis, which includes SEN pupils
- Familiarising School Improvement Partners (SIPs) with new materials designed to improve the attainment of SEN learners
- Including targets for SEN learners in the annual target setting process
- Arranging a workshop for SIPs, Special Educational Needs Co-ordinators (SENCOs) and headteachers on the use of the recently developed Progression Guidance related to low-achieving learners.
- Commissioning SEN support for those schools where the gap is most significant

NI 105 The SEN/non-SEN gap -achieving 5 A*-C GCSE inc. English and Maths

CYPP Priority	Promote Health and Wellbeing, Inclusion and Achievement		
Result	47.3% (2008) 46.4% (2009)	Target	N/A



Source: CYPT Performance Team

In 2007, the gap between the attainment of SEN and non-SEN learners in Brighton & Hove was narrower than the national gap by 1%. However, in 2008 this gap became wider than the national gap. In 2009, the SEN/non-SEN gap in Brighton & Hove was the same as the national one.

Activities in support of this outcome

Though the local gap is similar to the national one, the gap in attainment between SEN and non-SEN learners is substantial and a priority is to seek to narrow this. A number of actions have been taken including:

- Familiarising SIPs with new materials designed to improve the attainment of SEN learners and incorporating SEN issues in SIP agendas with secondary heads
- Including targets for SEN learners in the annual target setting process
- Arranging a workshop for SIPs, SENCOs and headteachers on the use of the recently developed Progression Guidance related to low-achieving learners. This includes key principles to support the raising of attainment for learners with SEN as well as data to support the setting of challenging targets

An additional workshop for SENCOs and other key school staff is planned for October 2010 in order to disseminate the key messages from the Achievement for All pilot.

NI 43 Young people within the Youth Justice System receiving a conviction in court who are sentenced to custody

CYPP Priority	Promote Health and Wellbeing, Inclusion and Achievement		
Result	11.2% (2008/9) 5.2% (2009/10)	Target	6% (2009/10)

Sentences to Custody				
Year	2007/8	2008/9	2009/10	2010/11
April to June	6	17	3	4
July to Sept	13	3	2	
Oct to Dec	9	8	7	
Jan to March	5	11	2	
Total Custodial Sentences	33	39	14	4
All sentences	622	349	270	75
% of sentences	5.3%	11.2%	5.2%	5.3%

Source: Youth Offending Service

The table above shows the number of custodial sentences per quarter for the last four years and this expressed as a percentage for the year. The target of 6% or less of all sentences to result in custody was reached in 09/10 and the first quarter of 10/11.

Analysis of Pre-Sentence Reports (PSR), produced in 2009 by the Youth Offending Service (YOS) to advise magistrates on sentencing outcomes, showed that 55% of young people 'eligible' for a custodial sentence received a community sentence instead. It is believed that the standard of the YOS's PSRs combined with confidence from sentencers in the YOS has led to reduced custodial sentences.

Activities in support of this outcome

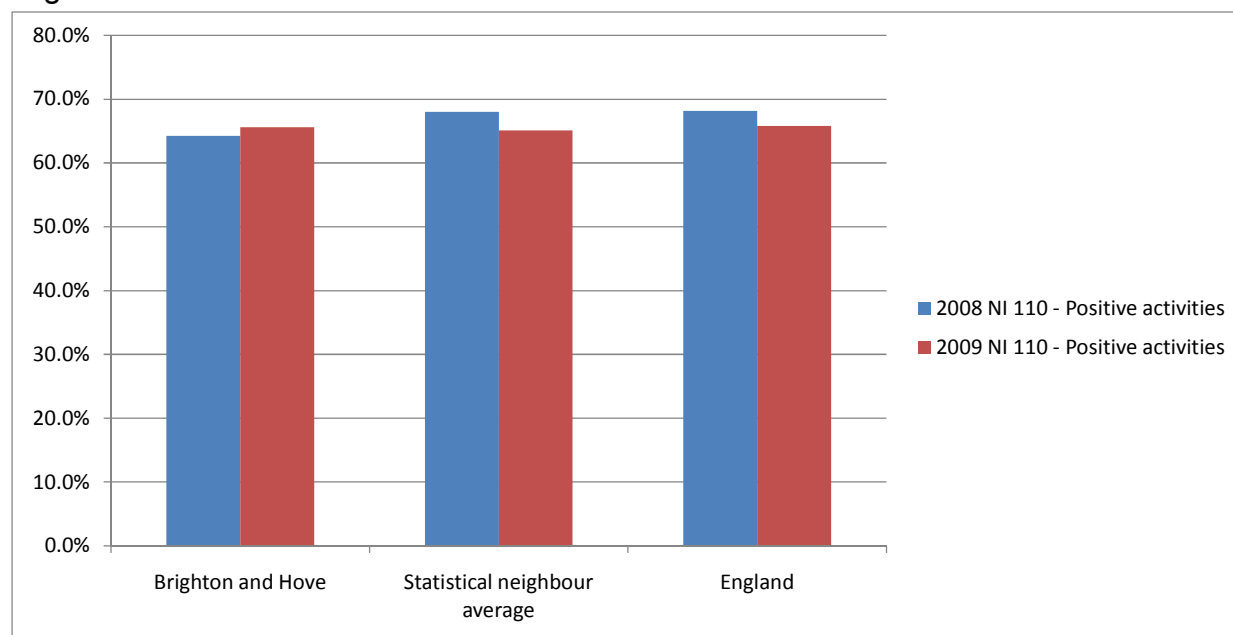
There remains a central government drive to reduce custodial sentences as well as the number of cases dealt with at court. The introduction of street based restorative justice disposals managed out of courts should help the youth offending service maintain it's high quality work in the courts. A green paper on the future of the criminal justice system will be published on 20th October.

NI 110 Young people's participation in positive activities

CYPP Priority	Promote Health and Wellbeing, Inclusion and Achievement		
Result	64.2% (2008) 65.6% (2009)	Target	N/A

This indicator is based on survey responses from pupils within the Tellus survey, specifically the proportion of young people in school year 10 responding 'yes' to the question "In the last 4 weeks, have you participated in any group activity led by an adult outside school lessons (such as sports, arts or a youth group)?"

The table below shows the responses for Brighton and Hove, statistical neighbours and England



Source: NFER/Dept for Education

There was a reported increase in involvement with positive activities in Brighton and Hove between 2008 and 2009, whilst elsewhere results show a decrease.

Because the Tellus survey was recently de-commissioned and is not taking place this year, the question about positive activities has now been incorporated into the local Safe and Well at School Survey which reports in February 2011.

Activities in support of this outcome

A youth service review was initiated in April 2010 with the full involvement of young people and other stakeholders. So far it has found that:

- There is a wide range of excellent provision of out of school and community based activities from sports clubs, arts and cultural activities, clubs in libraries, youth clubs, mobile services and youth cafés
- There is less provision for young women than men
- There is more work to be done around making children and families aware of what's on offer
- 16-19 year olds draw on these opportunities less than younger age groups

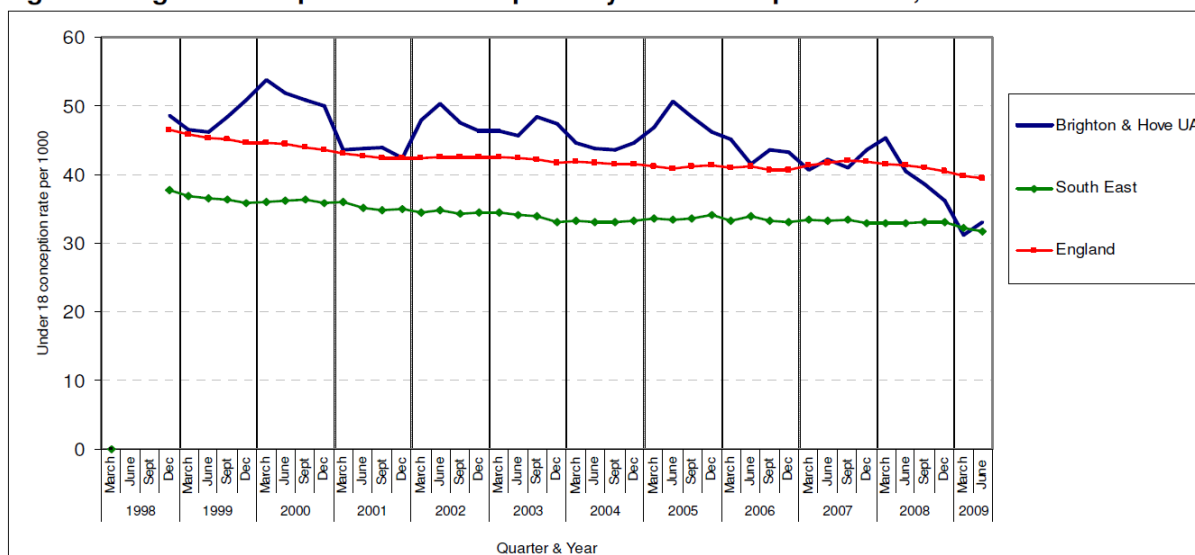
The outcomes and recommendations of the review are being finalised by a partnership steering group and will report in January 2011.

NI 112 Under 18 conception rate

CYPP Priority Promote Health and Wellbeing, Inclusion and Achievement

Result -32% (Quarter 1 2009) Target -45.00% (2010)

Figure 1 Regional comparisons of the quarterly u-18 conception rates, 1998-2009 Q2



Note: Rate per 1000 females aged 15-17

Source: Teenage Pregnancy Service

In Brighton & Hove, the second quarter 2009 conception rate was 33.1 per 1000 girls aged 15-17 years; a **32%** decrease from the 1998 baseline. The regional quarterly rates were 39.5 and 31.7 per 1000 for England and the South East, indicating reductions of 15% and 16% from the baseline, respectively.

In the first quarter 2010, the rate of under-18 terminations was 4 per 1000 young women aged 15-17. This is a decrease of 2 per 1000 compared to the fourth quarter 2009 and is at the same level as the first quarter 2009.

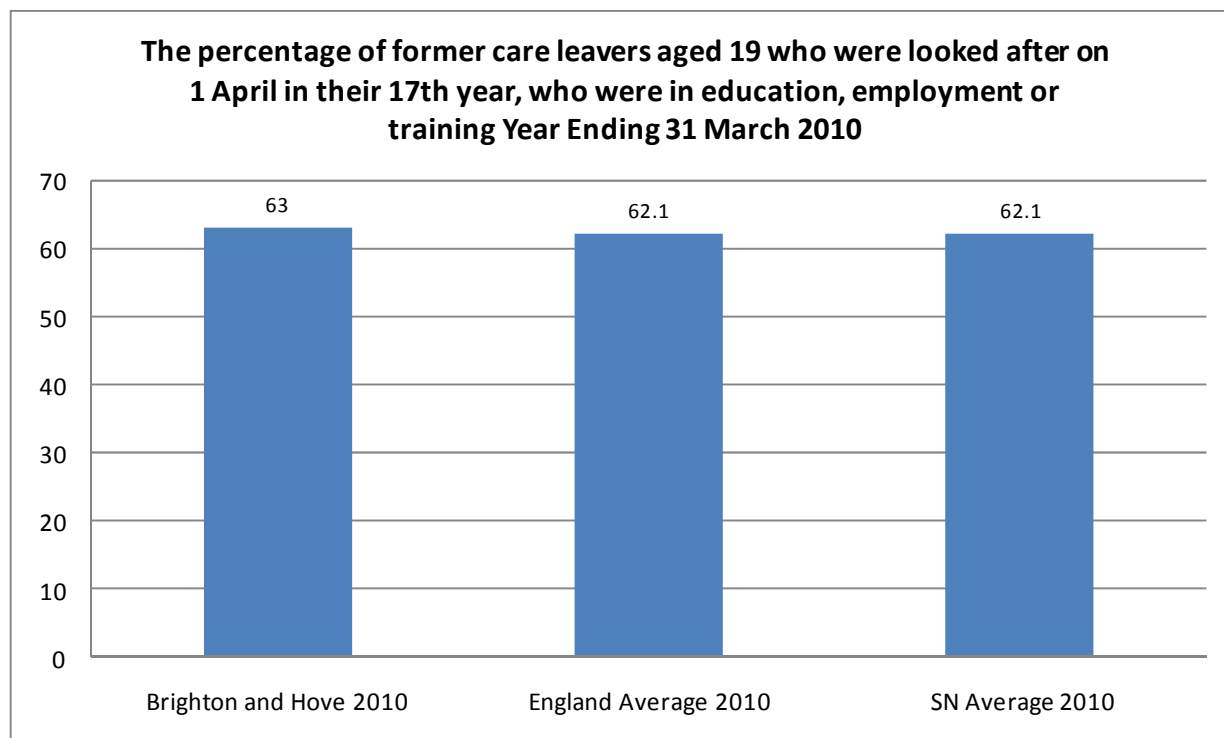
Activities in support of this outcome

- Initial responses to the new young women's support worker who works with under 19 British Pregnancy Advisory Service clients have been very positive. The take-up of the service is high and all young women using the service in June were moved onto Long Acting Reversible Contraception (LARC).
- The new open access Contraception and Sexual Health (CASH) drop-ins are open at the central Morley Street clinic. Targets have been set to ensure that the number of under 19 contacts are at the right level compared to the increase in investment. The current activity levels are already very close to target.
- The new school nurse drop-in services have been put in place. Three out of seven schools met their targets and one of these schools has only been operating since the beginning of the month.

NI 148 Care leavers at 19 – in education, employment and training

CYPP Priority Promote Health and Wellbeing, Inclusion and Achievement

Result 63% (2009/10) Target 67% (2009/10)



Source: Carefirst social care system

Performance is marginally better than England and statistical neighbour averages. The definition for this indicator is problematic and we have raised this as an issue with the Department for Education and with Ofsted. As a result local performance is distorted by the inclusion a small number of inappropriate cases and is, for the majority of care leavers much more positive.

Activities in support of this outcome

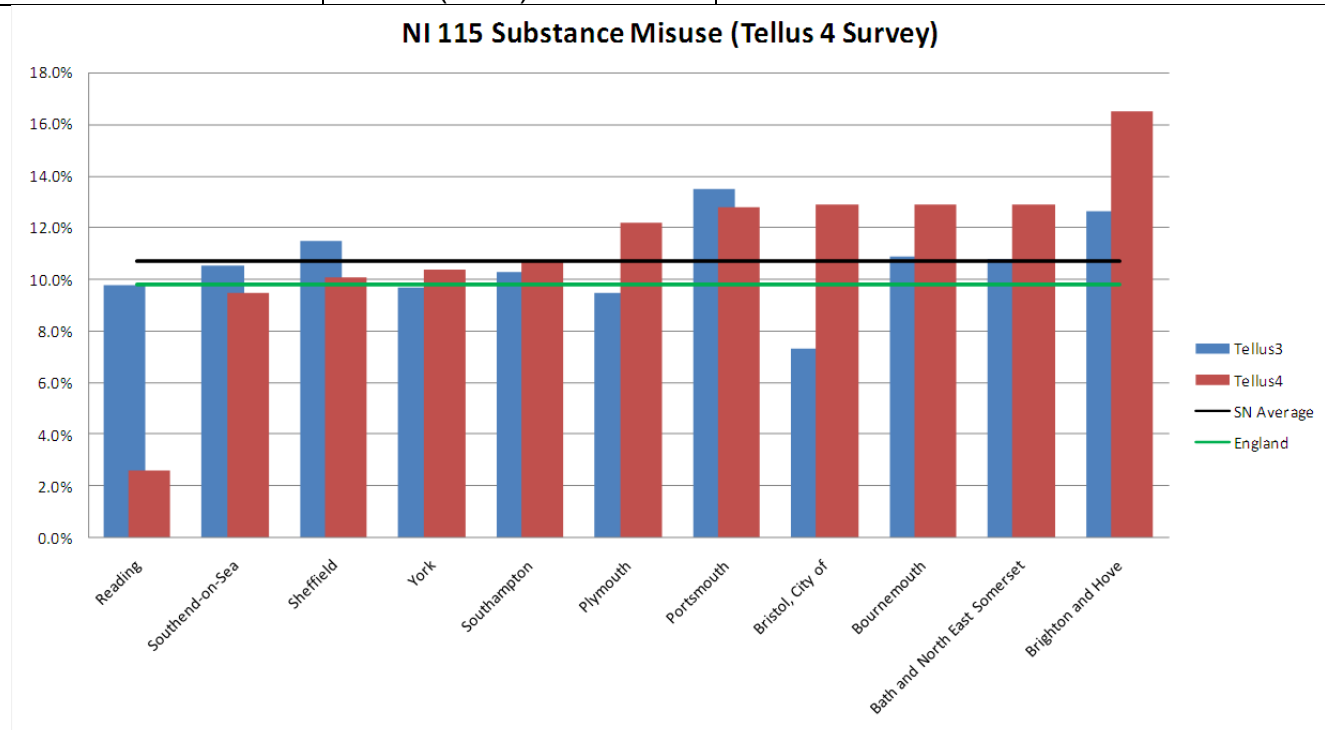
The 16 plus Support Team lead on ensuring we provide:

- Targeted intervention and support to care leavers from Personal Advisers, Supported Lodgings and Supported Housing Providers, Training Providers and Aim Higher co-ordinators in FE Colleges
- Further development of employment possibilities within Brighton & Hove City Council and its partners, including pathways to accessing apprenticeships offered by Mears for housing repair work, work experience in environmental health, animal welfare, building control, planning and parks.

NI 115 Substance misuse by young people

CYPP Priority	Promote Health and Wellbeing, Inclusion and Achievement	
---------------	---	--

Result	16.5% (2009)	
	12.7% (2008)	



Data Source: NFER/Dept for Education

This indicator is based on survey responses from pupils within the Tellus survey, specifically, pupils in years 6, 8 and 10 were asked to say whether they frequently misused drugs/volatile substances or alcohol, or both.

Because the Tellus survey was recently de-commissioned and is not taking place this year, the questions about drug and alcohol use have now been incorporated into the local Safe and Well at School Survey which reports in February 2011.

Whilst this survey indicates the proportion of young people using drugs and/or alcohol has increased, the Young Peoples Needs Assessment 2009/10 (carried out by the Drug and Alcohol Action Team) suggests that the number of young people using substances has not increased but the *amount of use* by each young person is increasing. Detailed analytical work will be undertaken on the new survey data to validate this finding in February 2011.

Activities in support of this outcome

- Interventions and professional training across tier 2 and 3 services are being reviewed and a new training programme on brief interventions will be delivered in the Autumn
- Recommendations being considered by the current youth review will address reducing the harm caused to young people who misuse substances
- A new specialist needs assessment process for the treatment of young people who misuse substances will start in November and the effectiveness of this will be closely monitored

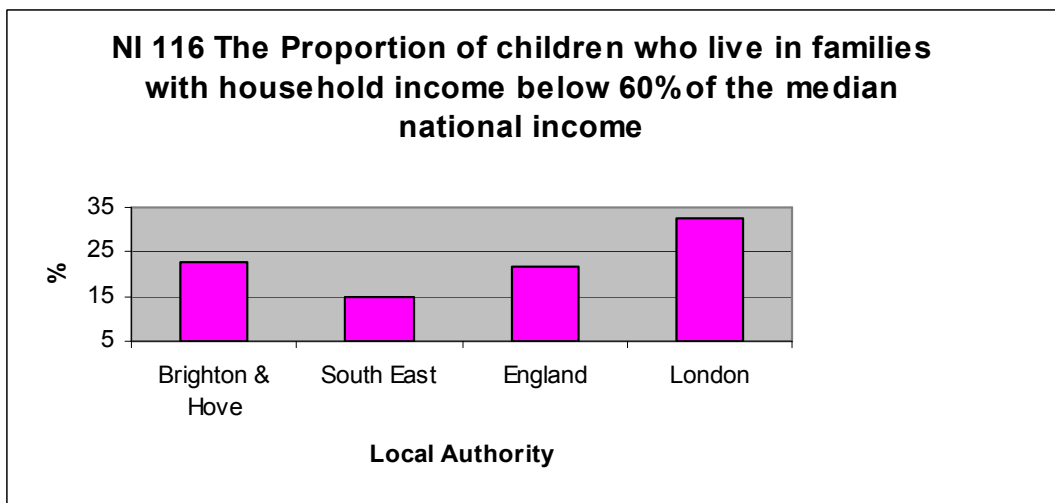
NI 116 Proportion of children in poverty

CYPP Priority Reduce Child Poverty and Health Inequality

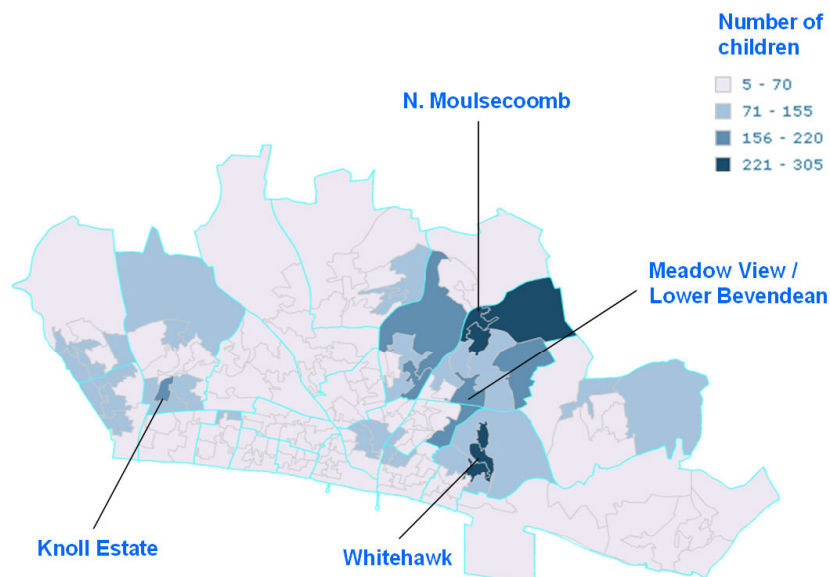
Result 22.8% (2007)

This indicator measures children in households living on less than 60% of the national median income. It includes children living in households on workless benefits and children in households receiving child tax credit. Families that claim neither but who live in income poverty remain unknown to us statistically. This data from 2007 is the latest and only year available for this specific measurement.

DWP Households Below Average Income survey, 2007



Map of all families experiencing child poverty in the city



Source: DWP, 2007

The map shows children experiencing poverty in both working and non-working households.

Child Poverty Needs Assessment and Strategy

- The Child Poverty Act 2010 is now in force and requires the council to work with partners to publish a needs assessment of and a strategy for reducing child poverty by April 2011.
- Initial findings of the needs assessment were presented to the September meeting of the Brighton & Hove Strategic Partnership

Key Initial Findings

- **Financial Support**
 - Importance of the Community and Voluntary Sector in delivering information and advice, but a need for better strategic monitoring
- **Employment and Skills**
 - Lower than average wages and rising unemployment
 - Skills gap between graduates and those with no qualifications
- **Life Chances**
 - High levels of drug/alcohol abuse and mental health problems
 - Gap between overall educational attainment and those pupils with SEN, eligible for free school meals or living in disadvantaged areas
- **Place**
 - Families are most affected by housing affordability and availability
 - Differentiation of areas affected by out of work and working poverty

Next steps

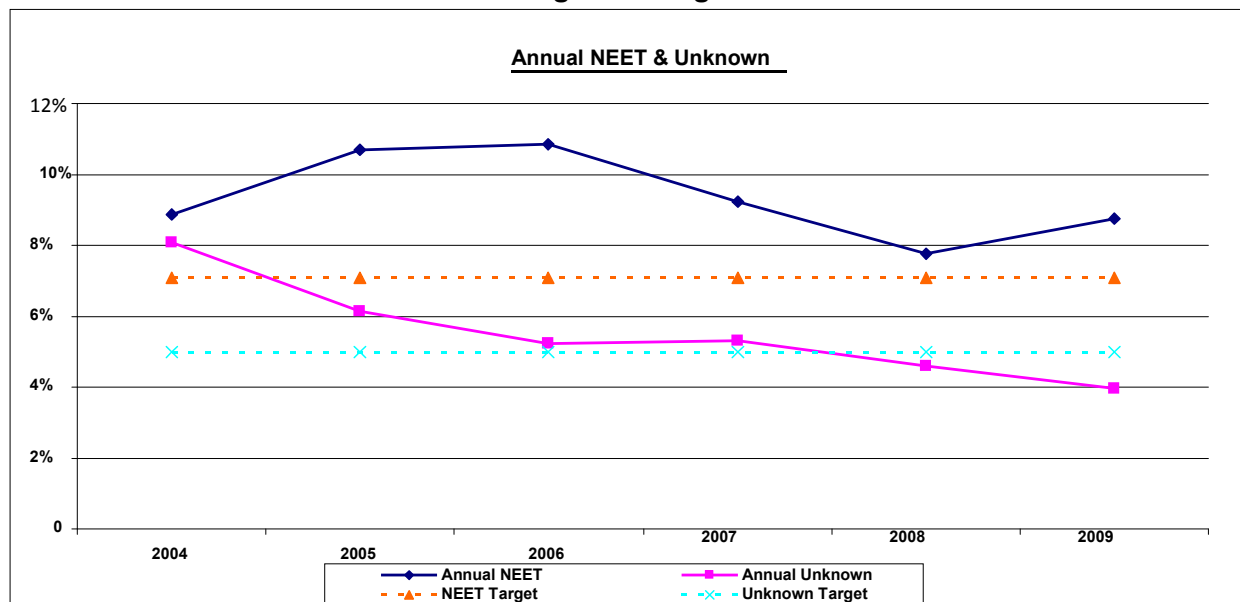
- The Brighton & Hove Child Poverty Task Group convenes in October and includes representatives of city partnerships.
- The needs assessment aims to conclude by end of November and will identify areas that require further investigation or new data.
- The strategy will be published by the statutory deadline of April 2011.

NI 117 16 to 18 year olds who are not in education, employment or training (NEET)

CYPP Priority Promote Health and Wellbeing, Inclusion and Achievement

Result	8.8% (2009) 2010 result in Feb '11	Target	7.6% (2009) 6.7% (2010)
--------	---------------------------------------	--------	----------------------------

Annual NEET and Not Knowns: Trend against Targets 2004 – 2009



The annual 16 – 18 NEET figures are based on the official Department of Education return of the average adjusted NEET percentage over November/December/January. From a high of over 10% in 2005 and 2006, the NEET figure has steadily improved, almost meeting the target in 2008.

The result for 2009 was 8.8%, which was above the statistical neighbour average of 7.0%, and above the England average of 6.4%. However, rates in Southampton and Portsmouth, similar southeast cities, were higher at 9.2% and 10.5% respectively.

The latest figures for July 2010 show a percentage NEET rate of 8.45%, slightly up on June 2010 (7.87%) but an improvement on the July 2009 figure which was 8.89%.

The current economic conditions appear to be contributing to the rise. Jobcentre Plus report that the employment situation within the city has worsened considerably with almost no vacancies offered to under 18s. However, the rate did fall for a period to 7.88% in April 2010, equating to 483 young people. This appears in large measure due to the January Guarantee initiative, which was successful in placing young people registering as NEET in December and January on E2E programmes.

Commentary

The council is currently consulting with partners and staff on future arrangements for the Connexions service and information will be provided to the Board when this process has been completed.

Section 2 – CYPP Strategic Improvement Priorities

Introduction

The CYPP 2009-2012 can be accessed via the following link:

<http://www.brighton-hove.gov.uk/index.cfm?request=c1152923>

This section will summarise progress since publication of the plan in respect of the four Strategic Improvement Priorities and the development initiatives that underpin them.

Strategic Improvement Priority 1: Strengthen safeguarding and child protection, early intervention and prevention

What we said we would do:

The CYPT and the Local Safeguarding Children Board (LSCB) will rigorously monitor and improve safeguarding strategies, policies and procedures to protect children and young people from harm, neglect or abuse. We will ensure that the whole children's workforce, including schools and colleges, the local health economy and all partner agencies, understand and use local arrangements to work with parents to identify children who need additional help or who cannot live safely in their families and to intervene early to support and protect them.

Initiatives: summary of activity

Maintain a robust and confident child protection pathway:

Child protection is a critical priority for the partnership. This is reflected in two other items on the agenda for this Board meeting: the outcome of the Unannounced Ofsted Inspection of contact, referral and assessment arrangements, and the presentation by the Independent Chair of the Local Children's Safeguarding Board (LSCB).

The Board received a report on the CYPT Workforce Development Strategy at its meeting on July 19th 2010 which included work with the LSCB to deliver a tiered training programme. Ofsted has recognised that good strategic planning has significantly improved early identification, referral and assessment arrangements. A new 'continuum of need' approach to referrals for social work/child protection has been developed through the LSCB to ensure the support of all key partners.

Child protection policy, procedures and operational guidance have been kept under review and new statutory guidance has been included.

Child protection remains a challenge for the partnership and for the LSCB. All partners, and especially the council's children's social work service, are alert to the Munro Review of Child Protection which is due to report in April 2011.

Increase targeted support and preventive services:

A coordinated programme of improvement activity is addressing this initiative:

The city council's Value for Money Programme is focussing on improving the effectiveness of interventions which protect the most vulnerable groups of children and young people at risk of harm, abuse or neglect. The 3 priority groups identified in the CYPP are at the centre of that programme.

The Section 75 Agreement between the council and the PCT, and the city's Public Health programme also give priority to these vulnerable groups commissioning a range of services including interventions to address rates of teenage pregnancy.

Major service redesign activity is also underway, as part of the S75 Agreement and to pilot the council's new approach to commissioning and 'total place' partnership, to address: alcohol related harm, substance misuse, and domestic violence and youth services.

The Community Safety Partnership continues to coordinate activity to address the needs of young people who are at risk of or involved in anti-social behaviour or criminal activity.

A significant proportion of targeted support and preventive services are commissioned through external grant funding. Anticipated changes to the level of this funding make it likely that the partnership will have to review its priorities and future arrangements.

A safe and supportive city:

In order to raise its profile, provide information to parents and promote the role of local communities in the city's safeguarding arrangements the LSCB has published its own web-site.

Work has continued to promote the Common Assessment Framework and the role of the lead professional, especially through the council's value for money programme. The council's children's services are developing a new supervision policy which will ensure that all staff receive the guidance and support they need.

A range of initiatives, including the work of the Healthy Schools Team, new cluster arrangements with schools and the work of community and voluntary sector agencies actively promotes the development of healthy relationships and anti-bullying activity across all services.

Strategic Improvement Priority 2: Reduce child poverty and health inequality

What we said we would do:

We will work with our partners across the city, through the Local Area Agreement and the joint Public Health Action Plan, to reduce inequality in outcomes between children and young people and their peers and to support vulnerable adults who are parents. We will address the impact of child poverty, and ensure the services we commission or provide are inclusive and nurture the potential of every child.

Initiatives: summary of activity

Joint Strategic Action:

A progress report in relation to Joint Strategic Needs Assessment (JSNA) was presented to the July Board meeting. Children's services, across the partnership, are working closely together to produce JSNAs, for example to underpin the service redesign reviews noted above.

The Board also received an update about the Child Poverty Needs Analysis and Strategy, and that is due for completion early in 2011. Progress on the implementation of the joint Public Health and CYPT action plan, including implementation of the Healthy Child Programme is monitored by the S75 Joint Commissioning Management Group.

Arrangements for joint strategic action are expected to be strengthened as a result of changes within the local council and the local health economy.

Narrow the gap for families and communities and for vulnerable groups:

The CYPP makes a commitment to: commission services which target the neediest communities and support their most vulnerable families to improve outcomes for children and young people; and to commission or provide services which narrow the gap in outcomes between the most vulnerable children and their peers.

The CYPP sets out a range of services which continue to be provided including children centres, good quality childcare, support to families of children with disabilities and the core Extended Schools offer.

Section 1 of this performance report sets out data which demonstrates progress on narrowing the gap (e.g. in the Early Years Foundation Stage) and this section summarises activity to address these issues through service redesign and commissioning.

Sustaining the momentum which the partnership has created will be a significant challenge in the changing context for public sector services.

Strategic Improvement Priority 3: Promote health and wellbeing, inclusion and achievement

What we said we would do:

The CYPT will support parents to bring up their children, commissioning services that improve the health, wellbeing and achievement of all children and young people, wherever possible ensuring mainstream services include those who are vulnerable or have additional needs. We will support young people on the pathway to success, targeting and challenging those at risk of making negative choices about their lifestyles.

Initiatives: summary of activity

Maximising life chances:

Section 75 Agreements (S75), between the council and NHS Brighton and Hove (PCT) and between the council and Sussex Community Partnership, were concluded in April 2010 and now underpin this area of activity.

A Joint Management and Commissioning Group now oversees a Commissioning Improvement Plan that reflects this initiative in the CYPP, the joint Public Health action plan for children and young people and the PCT's Annual Operating Plan. A Joint Management Group for the provision of children's community health services oversees a Provider Improvement Plan that includes implementation of the Healthy Child Programme.

Section 1 of this report sets out positive results for the city in respect of obesity rates in young children, hospital admissions and the under 18 conception rate. Each of the S75 Joint Management Groups also monitors a wider data set which includes child immunisations and child and adolescent mental health services.

As noted above commissioners in the council and PCT joint commissioning team are leading key service reviews to drive forward this initiative.

Access to education:

Schools and colleges now have direct representation on the Children's Trust Board and the LSCB and continue to be the driving force at the centre of the partnership's cluster arrangements designed to engage and support local communities.

Implementation of the city's School Improvement Plan remains the critical priority for the council and all of our schools and colleges. There has been a particular focus on progress and outcomes at secondary level.

Since the publication of the CYPP the national Building Schools for the Future and related capital programmes have changed significantly. Close partnership between the council and schools has maximised local benefit and ensured that the city is well positioned to take full advantage of future opportunities.

Behaviour and Attendance Strategies and the Special Educational Needs Strategy have been implemented improving the effectiveness and value for money of interventions and improving outcomes for children and young people.

Pathways to success:

A strong 14-19 Partnership is delivering an innovative curriculum. Reports in Section 1 on achievement of Level 2 qualifications and young people not in education, training or employment outline the positive impact of that work on the significant challenges the city faces in supporting young people.

Arrangements for the commissioning and delivery of integrated services to support young people across the city, as noted above are the focus of a strategic service review. Significant elements of those services are also likely to be affected as the partnership develops a local response to changes in the level of central government funding including a range of external grants which underpinned this area of activity.

Section 1 provides a positive report on the numbers of young people within the Youth Justice System receiving a conviction in court who are sentenced to custody which reflects effective joint working across the council and between the council and Sussex Police.

Strategic Improvement Priority 4: Develop the CYPT partnership and drive integration and value for money

What we said we would do:

The CYPT will strengthen inter-agency governance arrangements; take forward our integrated strategy for the planning, commissioning and provision of services; improve professional understanding between services; and deliver integrated front line services organised around users, not professional or institutional boundaries. During the life of this plan there will be a sharp focus on providing services based on evidence of improving outcomes which are accessible, streamlined and value for money.

Initiatives: summary of activity

Governance:

The actions set out in the CYPP to strengthen governance arrangements for children's services across the partnership have been taken forward. Key issues, such as the place of schools and colleges and S75 agreements have been addressed earlier in this section of the report.

In addition governance issues will also be addressed as part of the Board's main agenda item on November 1st which is to review partnership and

strategic planning arrangements across children's services.

Organisational development:

Significant organisational change has taken place, in some cases over and above the actions set out under this initiative. Further significant change is anticipated as part of the government's legislative programme and as an outcome of the Comprehensive Spending Review.

The project to publish an integrated care pathway for all children's services is being taken forward through the council's Value for Money Programme and as part of the joint commissioning arrangements between the council and PCT. As noted above, a 'continuum of need' approach, which will underpin the pathway, as been negotiated with partners through the LSCB will be published before the end of 2010.

Significant progress has taken place on the production of joint strategic analyses to inform the commissioning reviews noted above. Work on a children and young people's commissioning framework for children has been incorporated into the wider development of a new structure for the city council. This will include the review of local authority and NHS planning and performance management systems.

Workforce Development:

A full report on the CYPT Workforce Development Strategy was presented to the Board at its meeting on July 19th 2010.